



APPLICATION and PERFORMANCE SPECIFICATION

ACT1P1435PS220D0

Line Voltage: 220~240Vac 50/60Hz
 Safety Voltage: 198~264Vac 50/60Hz
 EEI=A1
 High Power Factor, Low THD
 Program Starting
 Auto Reset after Lamp Replacement
 Operating Frequency: 40~100 kHz

RoHS Compliance
 Lamp switching \geq 20000 cycles
 End of Lamp Life Protection
 Abnormal Protection
 U-out =430V
 Tc(max): 75°C
 Ta(max): 50°C

Lamp Type	Dimmer input	Line Volt.	Qty of Lamps	Mini. Start Temp (°C)	Input Current (A)	Input Power (W)	Power Fact (%)	THD (%)	CF	Ballast Factor
T5-E 35W	Full Bright	220	1	10	0.17	38.0	98	\leq 10	\leq 1.7	1
	Full Dim	220	1	10	0.03	6.6	N/A	N/A	\leq 1.7	N/A
T5-E 28W	Full Bright	220	1	10	0.14	30.5	98	\leq 10	\leq 1.7	1
	Full Dim	220	1	10	0.03	6.2	N/A	N/A	\leq 1.7	N/A
T5-E 21W	Full Bright	220	1	10	0.11	23.2	98	\leq 10	\leq 1.7	1
	Full Dim	220	1	10	0.03	5.5	N/A	N/A	\leq 1.7	N/A
T5-E 14W	Full Bright	220	1	10	0.07	16.3	98	\leq 10	\leq 1.7	1
	Full Dim	220	1	10	0.03	5.0	N/A	N/A	\leq 1.7	N/A

Application and Performance Specification Information Subject to Change Without Notification

Standards

IEC61347-1, IEC61347-2-3
 IEC60929
 IEC61000-3-2
 EN55015 (CISPR15), EN61547

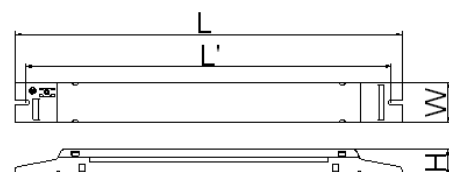
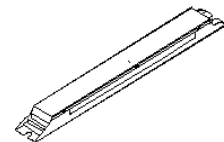
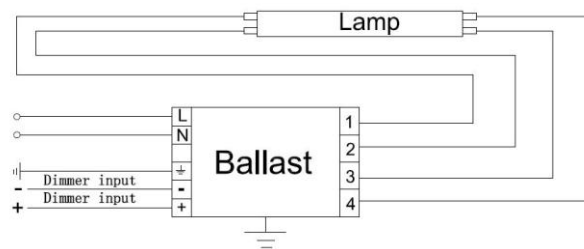
Physical Parameters

Overall Length (L): 362.0 \pm 1 mm
 Width (W): 29.4 \pm 1mm
 Height (H): 25.4 \pm 1mm
 Mounting Length (L'): 349.0 \pm 1mm
 Weight: 280g

Safety

CE

Sound Rated: A





APPLICATION and PERFORMANCE SPECIFICATION

ACT1P1435PS220D0



Caution

Install in accordance with the national electrical code; Disconnect power before serving; Use single solid copper wire (cross section area is $0.5 \sim 1.0 \text{mm}^2$, stripped to 7.0~8.5mm) to connect ballast and lamp.

Warranty:

Arcata electronics Inc warrants that each electronic ballast will be free from defects in material or workmanship including replacement for 5 years from the date of manufacture when properly installed and under normal condition use.